

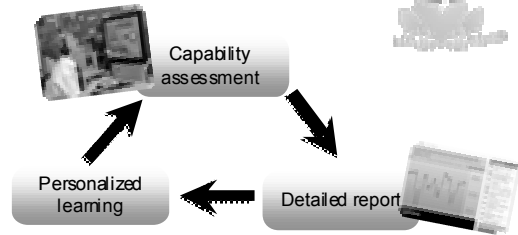
# Tracking children with assessment data

Dr Ian Walker  
Screen Learning Ltd



## Foundation stage assessment

Supports teachers with insight into strengths and needs of their children



## Smart Cat Profiling

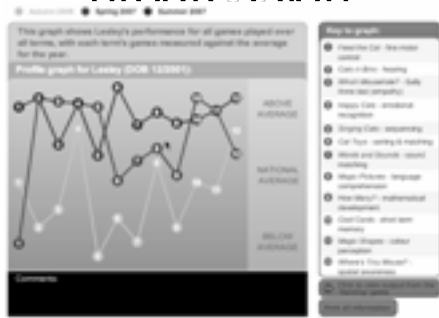
An on-line system providing **focused evidence** to inform **teaching and learning** with **early-years children**



Game	Assesses
How many?	Mathematical development
Cat toys	Sorting and matching
Where's Tiny Mouse?	Spatial awareness
Cool cards	Short-term memory
Magic pictures	Language comprehension
Magic shapes	Colour perception
Singing cats	Sequencing
Which mousehole?	Empathy
Cats in bins	Hearing
Feed the cat	Fine motor control
Happy cats	Emotion recognition
Words & sounds	Sound matching
Painting	Research



## Individual progression



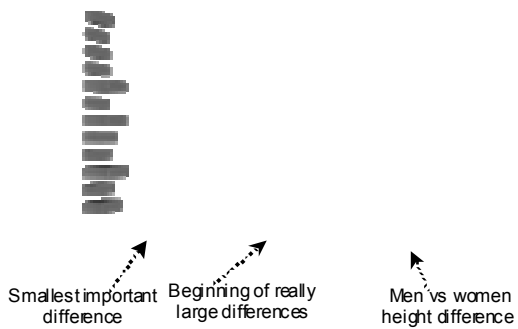
UIC

## So no gender differences?!

- Not in the skills we assess
- In some areas this is backed up by research
  - e.g., spatial memory difference definitely appears around puberty
- Not ruling out gender differences in other skills at this age
  - Especially productive language
- Might assessments be biased by girls' superior expressive skills?

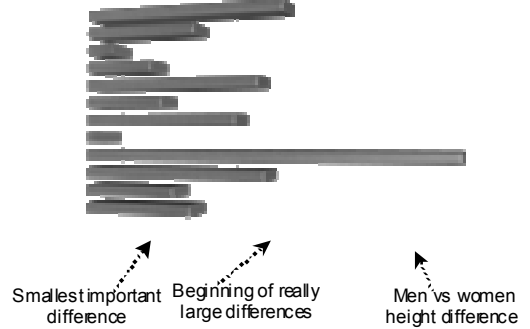
UIC

## Gender differences



UIC

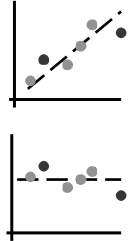
## September 2001 vs August 2002 birth



UIC

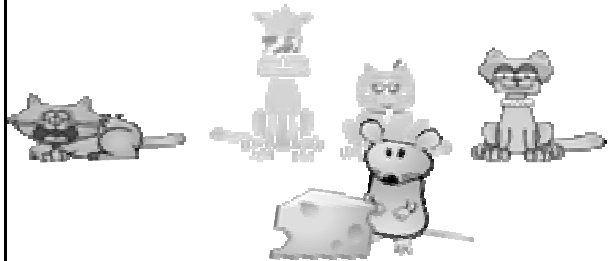
## Addressing age differences

- Use of regression to remove age differences
- Teachers can see the differences that remain between children when age is removed



UCL

## Summary



UCL

## Longitudinal research

- Working with UCL
- Follow up children ~2 years after assessment
- Can later difficulties be predicted from Reception profiles?

UCL